

POLK COUNTY CORNER RESTORATION FORMSECTION 6 TOWNSHIP 6 S RANGE 8 W W.M. BLM ID 100618

DLC _____ CORNER _____ COUNTY LINE MONUMENT

DATE 5/21/2025 CORNER RESTORATION FIELD BOOK 202-08 PAGE 138**PREVIOUS RENEWALS / SURVEYS, ETC.**

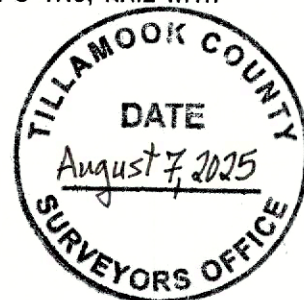
POLK COUNTY RE# 11137; POLK COUNTY CS# 14448

_____ CONDITION REPORT
 _____ X RENEWED
 _____ UNRECORDED
 _____ SURVEYED IN

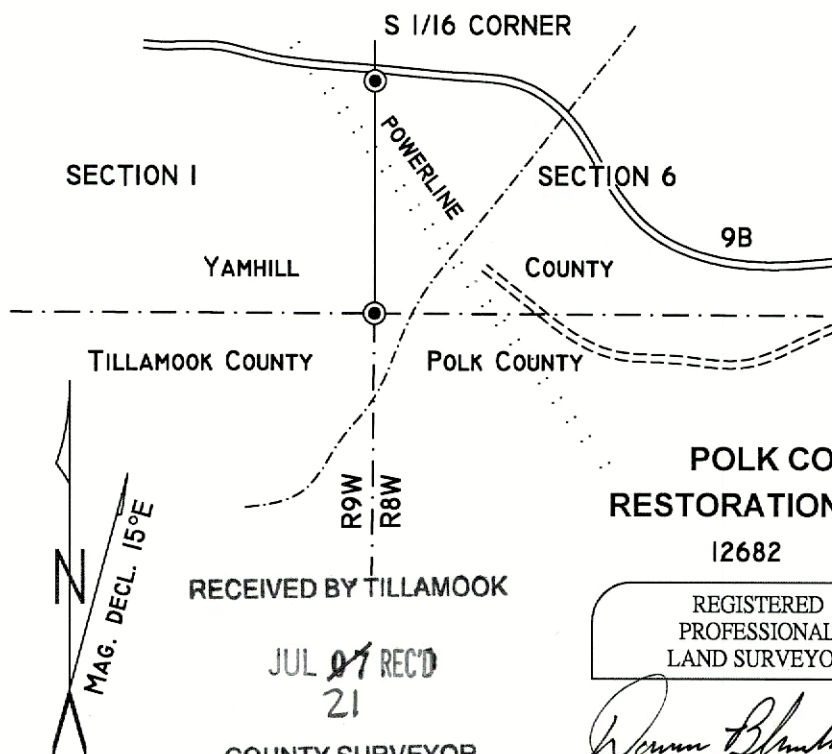
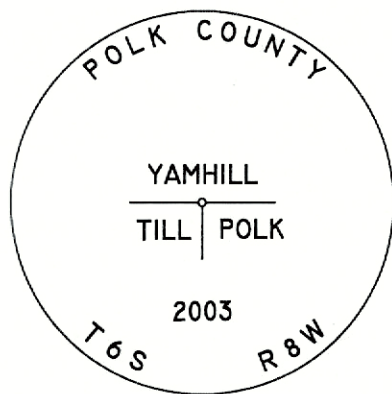
MONUMENT AND ACCESSORIES FOUND (CONDITION AND SOURCE)

I FOUND A $\frac{1}{2}$ "x30" GALVANIZED IRON PIPE WITH A BRASS CAP UP 10" ON A SOUTH SLOPE IN 12 YEAR OLD REPROD. THE MONUMENT WAS SET IN RE11137 AS PART OF CS14448. IT WAS FOUND TO BE LEANING HEAVILY EASTWARD BY A YAMHILL COUNTY CREW ON 1/30/2025 AND RIGHTED HOLDING MEASUREMENTS TO ITS ACCESSORIES. NOTHING WAS FILED WITH BY THE YAMHILL COUNTY SURVEYOR AT THAT TIME.

- 16" (14") HIGH STUMP FIR BEARS N01°E (N00°E) 13.55' (13.55'). CLOSED FACE, PC TAG, NAIL WITH MAGNET AND WASHER RIGHT SIDE CENTER. (RE11137)
- 29" (23") HIGH STUMP FIR BEARS S79°E (S76°E) 24.67' (25.02'). CLOSED FACE, PC TAG, NAIL WITH MAGNET RIGHT SIDE CENTER (REPLACED BY YAMHILL COUNTY PRIOR TO THIS RESTORATION). (RE11137)
- 17" (15") HIGH STUMP FIR BEARS S57 $\frac{1}{2}$ °W (S55°W) 17.92' (17.92'). CLOSED FACE, PC TAG, NAIL WITH MAGNET AND WASHER RIGHT SIDE CENTER. (RE11137)

**MONUMENT SET (PROCEDURES AND DESCRIPTION)**

I MEASURED TO THE STUMPS OF EACH OF THE THREE BEARING TREES MARKED IN RE11137 AND FOUND THAT THE DISTANCES TO THE NE AND SW TREES MATCHED VERY CLOSELY TO RECORD. THE NAIL FROM THE SE TREE HAD BEEN REPLACED BY THE YAMHILL COUNTY CREW, BUT THE DISTANCE DID NOT AGREE WITH THE OTHER TWO, AND SO I HELD ONLY THE NE AND SW TREES FOR DISTANCE TO CONFIRM LOCATION OF THE EXACT CORNER POINT. AT THE CORNER POINT, I SET A $\frac{5}{8}$ "x30" IRON ROD WITH A POLK CO SURVEYOR YELLOW PLASTIC CAP DOWN 24", OVER WHICH I RESET THE FOUND MONUMENT, NOW UP 5". I MADE A PUNCH MARK ON THE CAP.

MONUMENT DETAIL**FIRM / AGENCY**

POLK COUNTY SURVEYORS OFFICE
 820 SW ASH ST.
 DALLAS, OREGON 97338
 (503) 623-9287

WITNESSES JOSH HERZBERG

TONY MODE

Page 1 of 2

POLK CO.
 RESTORATION NO.
 12682

REGISTERED
 PROFESSIONAL
 LAND SURVEYOR

Darren Blackwell
 OREGON
 MARCH 8, 2022
 DARREN BLACKWELL
 97682

RENEWS 12/31/2025

NEW ACCESSORIES

- 5" DOUG.-FIR BEARS N23°E 8.75'. SCRIBED "YCBT".
- 4" DOUG.-FIR BEARS S42°E 9.9'. NAIL LEFT SIDE CENTER. SCRIBED "PCBT".
- 6" DOUG.-FIR BEARS S40°W 19.5'. NAIL LEFT SIDE CENTER. SCRIBED "TCBT".
- $\frac{5}{8}$ "x30" IRON ROD WITH 2" ALUMINUM CAP DOWN 2" BEARS S88 $\frac{1}{2}$ °W 16.51'. CAP STAMPED "POLK COUNTY SURVEYOR 2025 RMI".
- $\frac{5}{8}$ "x30" IRON ROD WITH 2" ALUMINUM CAP DOWN 2" BEARS N11°W 15.12'. CAP STAMPED "POLK COUNTY SURVEYOR 2025 RM2".

THE COURSES TO THE ABOVE ACCESSORIES WERE ESTABLISHED BY STAFF COMPASS AND STEEL TAPE.

THE S $\frac{1}{16}$ CORNER ON THE WEST SIDE OF SECTION 6 BEARS N01°03'38"E 303.13. BASIS OF BEARING OCRS SALEM ZONE GRID.

COORDINATES

COORDINATES WERE OBTAINED BY TIES TO TEMPORARY GNSS CONTROL. COORDINATES ARE PROJECTED TO THE FOLLOWING COORDINATE PLANES, NAD83 (2011) EPOCH 2010.00. UNITS IN INTERNATIONAL FEET.

OREGON COORDINATE REFERENCE SYSTEM SALEM ZONE

N = 271504.97
E = -1558.72

SPCS OREGON NORTH (3601)

N = 530499.97
E = 7369428.49

NOTES

1 -SET WITNESS TAGS, PAINTED SCRIBED FACES RED, AND PAINTED RED BANDS ON ALL LIVE BEARING TREES, UNLESS NOTED.

2 -ALL DISTANCES TO NEW BEARING TREES ARE MEASURED TO A 60D MAG NAIL AND POLK CO. SURVEYOR BRASS WASHER, RIGHT SIDE AND CENTER UNLESS OTHERWISE NOTED.

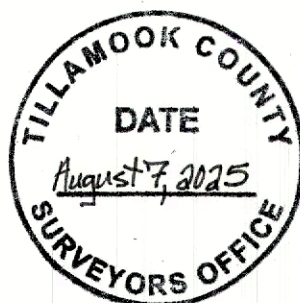
FIRM / AGENCY

POLK COUNTY SURVEYORS OFFICE
820 SW ASH ST.
DALLAS, OREGON 97338
(503) 623-9287

WITNESSES JOSH HERZBERG

TONY MODE

Page 2 of 2



POLK CO.
RESTORATION NO.

12682

REGISTERED
PROFESSIONAL
LAND SURVEYOR

Darren Blackwell
OREGON
MARCH 8, 2022
DARREN BLACKWELL
97682

RENEWS 12/31/2025